

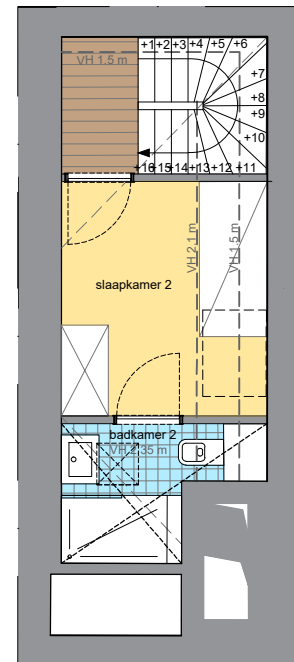
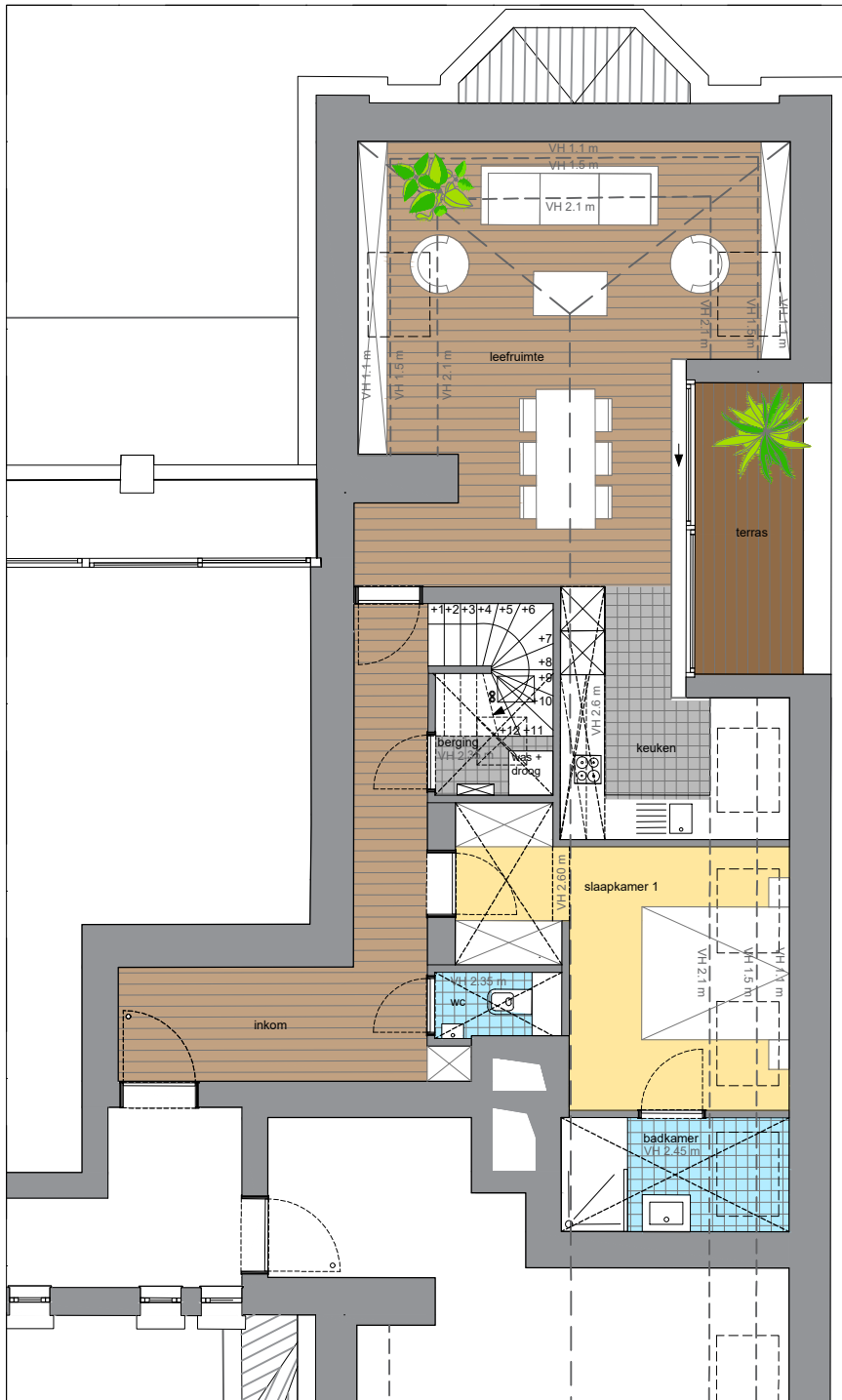
# Groot Park

## Sint-Vincentius

Appartement C2.L

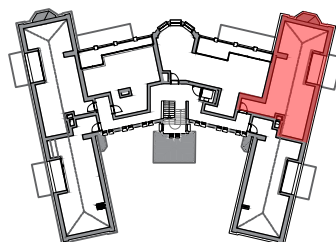
99,7 m<sup>2</sup> + 26,8 m<sup>2</sup> (duplex)

+ 7,3 m<sup>2</sup> terras

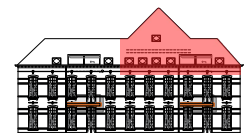


### NETTO OPPERVLAKTE

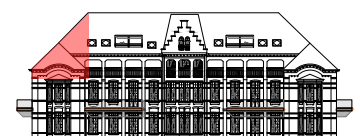
inkom	11,7 m <sup>2</sup>
wc	1,5 m <sup>2</sup>
leefruimte	25,9 m <sup>2</sup>
keuken	7,7 m <sup>2</sup>
berging	2,6 m <sup>2</sup>
slaapkamer 1	12,3 m <sup>2</sup>
badkamer 1	4,1 m <sup>2</sup>
nachthal	1,6 m <sup>2</sup>
slaapkamer 2	7,3 m <sup>2</sup>
badkamer 2	3,5 m <sup>2</sup>
terras	5,8 m <sup>2</sup>



grondplan verdieping +2\_nieuwe toestand



Westgevel



Zuidgevel